

LINKSYS® Quick Installation

This Quick Installation is meant to help you install the product quickly and easily. For detailed instructions on installation, configuration, and further setup options, please consult the User Guide.

Instant Wireless® Series

Wireless-G Notebook Adapter



WPC54G

Package Contents

- One Wireless-G Notebook Adapter (1)
- One Setup Wizard CD-ROM with User Guide (2)
- One Quick Installation guide
- One Registration Card



Installation of the WPC54G is different for different versions of Windows.

- For Windows 98SE, Me, and 2000, go to Step 1 and then Step 2.
- For Windows XP, go to Step 2 and then Step 3.

1 Software Installation and Configuration for Windows 98SE, Me, and 2000

Attention Windows XP users: Go directly to Step 2.

A. Insert the Setup Wizard CD-ROM into your CD-ROM drive. The Setup Wizard should run automatically, and the *Welcome* screen should appear. If it does not, click **Start** and choose **Run**. In the field that appears, enter **D:\setup.exe** (if "D" is the letter of your CD-ROM drive).

B. Click the **Install** button.



C. After reading the License Agreement, click **Next** if you agree, or **Cancel** to end the installation.



D. The Setup Wizard will ask you to choose a wireless mode. Click the **Infrastructure Mode** radio button if you want your wireless computers to network with computers on your wired network using a wireless access point. Click the **Ad-Hoc Mode** radio button if you want multiple wireless computers to network directly with each other.

In the *SSID* field, enter the **SSID** of your wireless network. The SSID must be identical for all devices in the network. The default setting is **linksys** (all lowercase). Click **Next**.

For added security, Linksys recommends that you change the default SSID to a unique name.



E. If you chose Infrastructure Mode, go to **Step F** now. If you chose Ad-Hoc Mode, select a **Channel** from the list provided. All computers on your wireless network must use the same channel in order to communicate with each other. If you are unsure about which channel to use, select the default channel (Channel 6). Then, select the *Network Mode*: **Mixed Mode**, which is for both Wireless-G and Wireless-B, or **G-Only Mode**, if there will be no Wireless-B users. Click **Next** and go to **Step F**.



F. The Setup Wizard will ask you to review your settings before it starts to copy files. Click **Next** if you are satisfied with your settings, or click **Back** to change any settings.



G. After the files have been successfully copied, you will see Figure G. Click the **Exit** button.



Proceed to Step 2.

Continued on back

2 Connecting the Wireless-G Notebook Adapter

- A. Turn off your notebook PC.
- B. Locate an available CardBus slot on your notebook PC.
- C. Insert the Adapter with the label side facing up, so the Adapter fits snugly in the CardBus slot.



- D. Restart your notebook PC.
- E. Windows will begin copying the driver files to your computer. If Windows asks you for the original Windows CD-ROM, insert the CD-ROM, and direct Windows to its proper location (e.g., D:\).

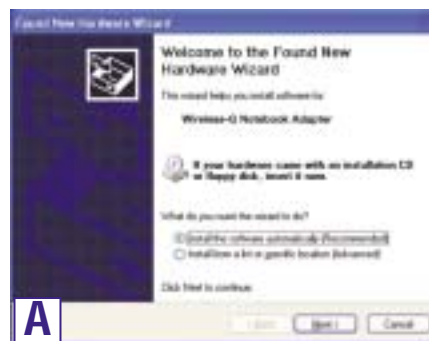
Windows 98SE, Me, and 2000 users: Congratulations! The installation of the Wireless-G Notebook Adapter is complete.

Windows XP users: Proceed to Step 3.

3 Driver Installation and Configuration for Windows XP

After connecting the Adapter to your computer, you will install the driver.

- A. Windows XP will automatically detect the Adapter. Insert the Setup CD-ROM into your CD-ROM drive. Click the radio button next to **Install the software automatically (Recommended)**. Then click **Next**.



- B. When Windows has finished installing the driver, click **Finish**.

Note: Windows XP has a built-in configuration tool. Use Windows XP Wireless Zero Configuration (located in the system tray at the bottom of your screen) to configure the Adapter.

- C. After installing the Adapter, the Windows XP Wireless Zero Configuration icon will appear in your computer's system tray. Double-click the icon.



Note: Steps D and E are the instructions and screenshots for Windows XP with Service Pack 1 installed. If you have not installed Service Pack 1, select the network you want, and click the **Connect** button. If the network has WEP encryption enabled, enter the WEP key in the *Network key* field, and then click the **Connect** button.

- D. The screen that appears will show any available wireless network. Select the network you want.

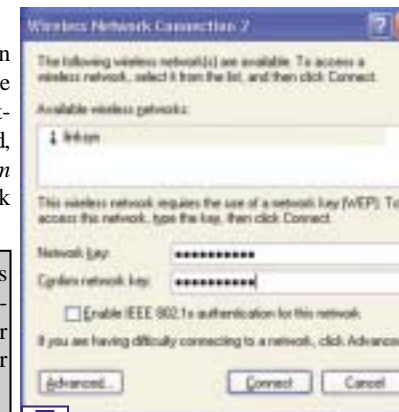
If this network has WEP encryption enabled, go to Step E.

If this network does not have WEP encryption enabled, then the screen in Figure D will appear. Make sure the box next to *Allow me to connect to the selected wireless network, even though it is not secure* is checked. Then click **Connect**, and go to Step F.



- E. If WEP is enabled, the screen in Figure E will appear. Enter the WEP key of your wireless network in the *Network key* field, and re-enter it in the *Confirm network key* field. Then click **Connect**.

Important: Windows XP Wireless Zero Configuration does not support the use of a passphrase. Enter the exact WEP key used by your access point.



- F. The screen in Figure F will appear if your connection is active.



For more information about WEP, refer to your access point's documentation, or visit www.linksys.com. For more information about wireless networking on a Windows XP computer, enter the keyword **wireless** in the Windows XP search engine.

Windows XP users: Congratulations! The installation of the Wireless-G Notebook Adapter is complete.

For additional information or troubleshooting help, refer to the User Guide on the Setup CD-ROM. Assistance is also available from one of these resources:

Technical Support	800-326-7114 (toll-free from US or Canada)
E-mail Support	support@linksys.com
Website	http://www.linksys.com or http://support.linksys.com
FTP Site	ftp://ftp.linksys.com
Sales Information	800-546-5797 (800-LINKSYS)